

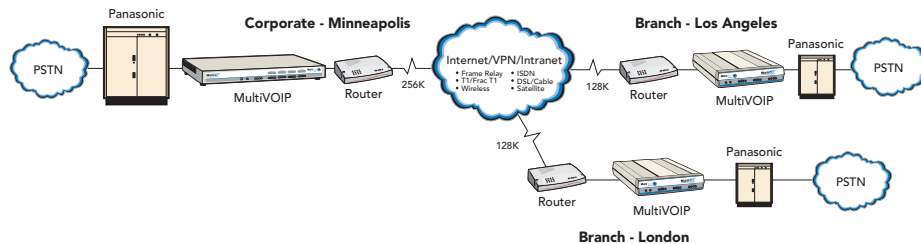
Complementary Solution Provides Cost Savings over Data/Voice Networks

MultiVOIP Works with Panasonic Advanced Hybrid and Digital Super Hybrid Telephone Systems

Panasonic Consumer Electronics Company and Multi-Tech Systems announces tested functionality between Panasonic's Telephone Systems and PBXs with Multi-Tech's Voice over IP technologies. Multi-Tech's complete line of MultiVOIP Voice over IP gateways and combination gateway/gatekeepers are being recommended for use with Panasonic's Advanced Hybrid Telephone Systems, Digital Super Hybrid Telephone Systems and Digital PBX System.

The Panasonic/Multi-Tech product combination works in multi-location IP networks where Panasonic Communications Systems are or will be providing voice services at each location. By connecting Multi-Tech Voice over IP gateways to existing routers and the Panasonic equipment at the various sites, both voice and fax communications between locations can ride free over the existing IP data network.

Multi-Tech's MultiVOIP Gateways connect to Panasonic's telephone systems' voice cards via FXS or FXO interfaces and a user supplied router via a 10/100 Ethernet interface. Any voice or fax calls then made from one network location to another via the telephone equipment will be routed over the IP network at no charge. Using the PSTN fail-over feature, calls are routed over the PSTN if the IP network has problems. A network comprised of Panasonic and Multi-Tech equipment provides significant savings on long distance and international voice and fax telephone charges.



Solution Benefits:

- Toll-free voice communication between office locations
- Puts savings towards the bottom line
- Utilizes existing equipment

Solution Components:

- MultiVOIP Voice over IP gateways at each location
- Panasonic Hybrid Telephone System or Digital PBX at corporate office
- Panasonic Hybrid Telephone System or Digital PBX at remote office (not required)

Multi-Tech MultiVOIP

MultiVOIP gateways bridge the voice network to the data network to provide toll-bypass long distance calling over the Internet or private WAN. MultiVOIP operates alongside a company's PBX and analog phone systems to extend voice and PBX functionality to remote locations. With MultiVOIP, you will avoid the hassle and expense of replacing existing routers, WAN connections or phone systems required by other VOIP solutions.

- Flexible 1-, 2-, 4-, and 8-port analog models and 24-port digital solution
- Award-winning business quality voice connections (supports DiffServ)
- Minimal bandwidth requirements (14K bps per call including IP overhead)
- Utilizes H.323 and SIP protocols for complete interoperability
- No disruption to existing voice equipment
- No additional hardware needed
- Transparent to the user (no training required)
- PSTN fail-over automatically routes calls over the PSTN if the IP network is congested or down
- Supports H.450 supplementary services to provide for call transfer, call forwarding, call hold, call waiting, and name identification
- Web based configuration and management
- 2-year warranty

Model No.	Description
MVP130	1-Port VOIP gateway
MVP210	2-Port VOIP gateway
MVP410	4-Port VOIP gateway
MVP810	8-Port VOIP gateway
MVP2410	24/48-Port T1/PRI VOIP gateway

Panasonic Advanced Hybrid Telephone Systems

Expressly designed to streamline business communications, an Advanced Hybrid System organizes phone lines into a cohesive system and makes a host of advanced features available to each extension at the office. With an Advanced Hybrid System you can assign specific lines to each phone, keep track of calls, forward your calls to an outside location, screen incoming caller information, as well as page all system extensions.

Model No.	Description
KX-TA624	3 CO's, 8 stations, expandable to 6 CO's, 24 stations
KX-TA1232	8 CO's, 16 stations, expandable to 12 CO's, 32 stations

Digital Super Hybrid Telephone Systems

Digital Super Hybrid Systems provide the power, flexibility, and expansion capability to fully accommodate growing businesses. Designed with time-saving features such as automatic route selection, back-up operator, caller ID, CTI compatibility and Direct Inward Dial (DID), the Digital Super Hybrid Systems are easy to use, versatile and future-ready.

Model No.	Description
KX-TD308	3 CO's, 12 stations, expandable to 16 stations
KX-TD816	4 CO's, 8 stations, expandable to 8 CO's, 32 stations
KX-TD1232	8 CO's, 16 stations, expandable to 12 CO's, 64 stations

Digital PBX Systems

The Digital PBX Systems non-blocking architecture expands from 8 phones and 8 lines to as many as 448 extensions and 192 central office lines by adding expansion cards. You can also connect several KX-TD500 Systems to make a PBX network, which lets users share a certain number of outside lines for making telephone calls through T1 lines. Additional features include automatic route selection, station message detail recording, Direct Inward Dial (DID) and Uniform Call Distribution (UCD).

Model No.	Description
KX-TD500	Digital Super Hybrid Telephone System

About Multi-Tech

An ISO 9001 certified global manufacturer of award winning Internet, remote access, and telephony products, Multi-Tech Systems provides end-to-end solutions for small- to medium-sized businesses. Multi-Tech holds over 50 patents in voice and data technologies and has deployed thousands of MultiVOIP gateways since 1999.

Multi-Tech Systems

Tel: 800-328-9717 or (763) 785-3500
www.multitech.com

Matsushita Electric Corporation of America (Panasonic) is not affiliated with Multi-Tech Systems, and Panasonic is not responsible for the acts or omissions of Multi-Tech including, without limitation, those which relate to or arise out of Multi-Tech's products or their inability to connect to or otherwise interface with Panasonic product(s).