

Boxboro Systems

Embedded Device Server Provides Web-based User Interface

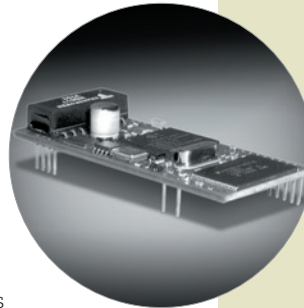
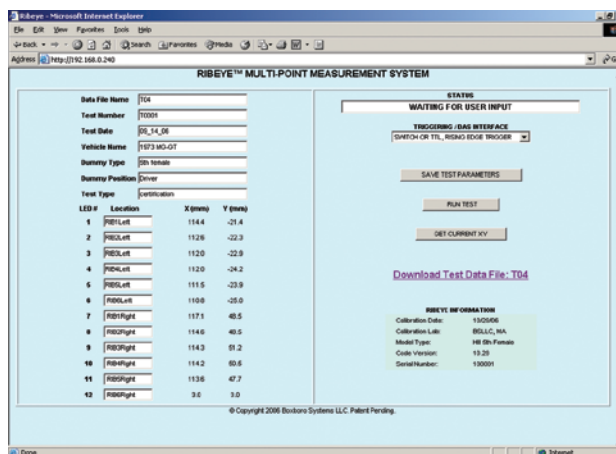
Boxboro Systems specializes in test and measurement products for applications in which traditional measurement devices don't work well. Their patent-pending product is used in automotive crash dummies to measure deformation of the ribs at multiple points without affecting the bio-fidelity of the dummies. The Multi-Tech SocketEthernet IP® device server, embedded in the product, IP-enables the device allowing for data acquisition.

The RibEye™ Multi-point Deflection Measurement System provides simultaneous measurement of the X and Y positions of multiple points on the rib cage. The embedded SocketEthernet IP device server provides the RibEye web page user interface. The SocketEthernet IP device server also provides Telnet connections for test automation and is used for FTP data file transfers.

"The RibEye user community runs multiple, different operating systems (e.g., Windows, Linux, Unix), so Multi-Tech's product allows our customers to use their own web browser to interface with the RibEye," explains Dan Handman, President of Boxboro Systems. "The primary advantage to Boxboro Systems is that we do not have to provide user-side software for the RibEye interface."

The SocketEthernet IP device server provides the powerful ability to IP-enable serial devices allowing more options for data acquisition and device management. The module integrates a processor, operating system, TCP/IP stack, web server and a network connection to provide a complete serial-to-Ethernet connectivity solution.

"We selected the SocketEthernet IP because it works without enabling Java on the web browsers. The typical RibEye customer is a large corporation, and many such companies disable Java," said Handman.



SocketEthernet IP

- Embedded Serial-to-Ethernet device server
- IP-enable virtually any serial device
- Flexible IP protocol stack
- Universal socket connectivity

Boxboro Systems LLC

makes optical instrumentation for position measurement in automotive crash test dummies. The company produces the RibEye, a multi-point non-contact deflection measurement device that records rib compression data during crash tests.



For more information contact:

Boxboro Systems LLC
Telephone: 978-257-2219
Web: www.boxborosystems.com