

# Multi**VOIP** Manager

## Quick Start Guide

82099700



## **MultiVOIPManager Quick Start Guide**

P/N 82099700 Revision A

Copyright © 2001 by Multi-Tech Systems, Inc.

All rights reserved. This publication may not be reproduced, in whole or in part, without prior expressed written permission from Multi-Tech Systems, Inc.

Multi-Tech Systems, Inc. makes no representations or warranties with respect to the contents hereof and specifically disclaims any implied warranties of merchantability or fitness for any particular purpose. Furthermore, Multi-Tech Systems, Inc. reserves the right to revise this publication and to make changes in the content hereof without obligation of Multi-Tech Systems, Inc. to notify any person or organization of such revisions or changes.

### **Record of Revisions**

<i>Revision</i>	<i>Date</i>	<i>Description</i>
A	2/3/01	Manual released.

### **Trademarks**

MultiVOIP, MultiVOIPManager, Multi-Tech, and the Multi-Tech logo are trademarks of Multi-Tech Systems, Inc. Adobe and Acrobat are trademarks of Adobe Systems Incorporated. Microsoft, Windows, Windows 95, and Windows NT are either registered trademarks or trademarks of Microsoft Corporation in the United States and/or other countries.

Multi-Tech Systems, Inc.  
2205 Woodale Drive  
Mounds View, MN 55112 U.S.A

Phone (763) 785-3500 or (800) 328-9717

Fax (763) 785-9874

Technical Support (800) 972-2439

Internet <http://www.multitech.com>

## **Software User License Agreement**

MultiVOIPManager is licensed by Multi-Tech Systems, Inc., to the original end-user purchaser of the product, hereafter referred to as "Licensee." The License includes the distribution disc, other accompanying programs, and the documentation. MultiVOIPManager, hereafter referred to as "Software," consists of the computer program files included on the original distribution disc.

Licensee agrees that by purchase and/or use of the Software, he hereby accepts and agrees to the terms of this License Agreement.

In consideration of mutual covenants contained herein, and other good and valuable considerations, the receipt and sufficiency of which is acknowledged, Multi-Tech Systems, Inc. does hereby grant to the Licensee a non-transferable and non-exclusive license to use the Software and accompanying documentation on the following conditions and terms: The software is furnished to the Licensee for execution and use on a single computer system only and may be copied (with the inclusion of the Multi-Tech Systems, Inc. copyright notice) only for use on that computer system. The Licensee hereby agrees not to provide or otherwise make available any portion of this software in any form to any third party without the prior express written approval of Multi-Tech Systems, Inc.

Licensee is hereby informed that this Software contains confidential proprietary and valuable trade secrets developed by or licensed to Multi-Tech Systems, Inc. and agrees that sole ownership shall remain with Multi-Tech Systems, Inc.

The Software is copyrighted. Except as provided herein, the Software and documentation supplied under this agreement may not be copied, reproduced, published, licensed, sub-licensed, distributed, transferred, or made available in any form, in whole or in part, to others, without expressed written permission of Multi-Tech Systems, Inc. Copies of the Software may be made to replace worn or deteriorated copies for archival or backup procedures.

Licensee agrees to implement sufficient security measures to protect Multi-Tech Systems, Inc. proprietary interests and not to allow the use, copying or transfer by any means, other than in accordance with this agreement. Licensee agrees that any breach of this agreement will be damaging to Multi-Tech Systems, Inc.

Licensee agrees that all warranties, implied or otherwise, with regard to this Software, including all warranties of merchantability and fitness for any particular purpose are expressly waived, and no liability shall extend to any damages, including consequential damages, whether known to Multi-Tech Systems, Inc. It is hereby expressly agreed that Licensee's remedy is limited to replacement or refund of the license fee, at the option of Multi-Tech Systems, Inc., for defective distribution media. There is no warranty for misused materials.

Neither this software nor the accompanying documentation may be modified or translated without the written permission of Multi-Tech Systems, Inc.

This agreement shall be governed by the laws of the State of Minnesota. The terms and conditions of this agreement shall prevail regardless of the terms of any other submitted by the Licensee. This agreement supersedes any proposal or prior agreement. Licensee further agrees that this License Agreement is the complete and exclusive statement of Agreement, oral, written, or any other communications between Multi-Tech Systems, Inc. and Licensee relating to the subject matter of this agreement. This agreement is not assignable without written permission of an authorized agent of Multi-Tech Systems, Inc.

## Introduction

MultiVOIPManager is an SNMP manager that centralizes control and configuration of your company's MultiVOIPs wherever they are. Through it you can upgrade and reset MultiVOIPs, change MultiVOIP configurations, monitor connections, terminate calls, and review usage patterns.

## Installing and Starting MultiVOIPManager

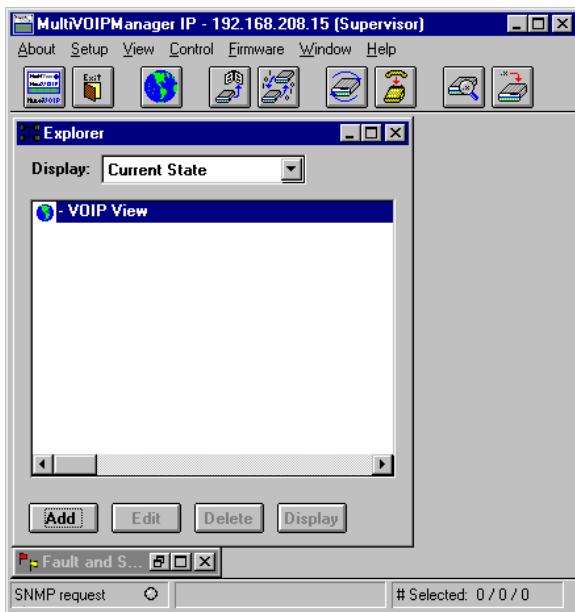
MultiVOIPManager is included on your MultiVOIP's system CD. It can be installed on any computer that is running Windows 3.1 and above or Windows NT 4.0 and above and has an Internet connection.

### To install and start MultiVOIPManager

1. Insert the MultiVOIP system CD into the management computer's CD-ROM drive. If AutoRun is enabled, the MultiVOIP installation screen appears. If AutoRun is not enabled, use Windows Explorer to find AutoRun.exe in the root directory of the CD, and then double-click it.
2. On the MultiVOIP installation screen, click **MultiVOIP Manager**. The MultiVOIPManager Setup wizard appears.
3. Follow the instructions that appear on the screen.
4. When MultiVOIPManager is installed, launch MultiVOIP-Manager by double-clicking its icon on the Desktop.

### Initial Configuration of MultiVOIPManager

In MultiVOIPManager, your MultiVOIPs and VOIP channels are displayed and selected in a window called the *Explorer*. Initially, the Explorer is empty except for the VOIP View icon. Before you can use MultiVOIPManager, you must first add the MultiVOIPs you want to control or monitor.



#### To add a MultiVOIP to the Explorer

1. Select the VOIP View icon by clicking it.
2. Click the **Add** button. The **Add IP Site** dialog box appears:

The screenshot shows a dialog box titled "Add IP Site". It has a title bar with a close button (X). The dialog contains the following fields and controls:

- IP Address:** Four separate input boxes containing the values "192", "168", "90", and "201".
- Long Name:** A text input field containing "VOIP2".
- Short Name:** A text input field containing "VO2".
- Events Directory:** An empty text input field.
- Community Settings:** A section containing two text input fields: "Get Community" and "Set Community", both containing the value "public".
- Buttons:** "OK" and "Cancel" buttons at the bottom.

3. Type the requested information into the **Add IP Site** dialog box:

**IP Address:** The IP address of the MultiVOIP.

**Long Name:** The name you want to appear in the Explorer and in titles of windows that display site information.

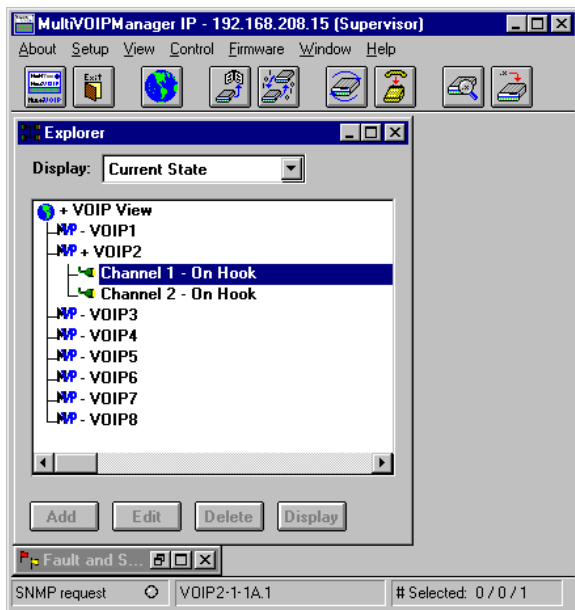
**Short Name:** A three-character name that identifies the MultiVOIP site in the **VOIP-Channel** column of the Fault and Status Events window.

**Events Directory:** The path where event logs for the IP site are stored. This path is created automatically when the IP site is created, and appears only in the **Edit** version of the **IP Site** dialog box.

**Community settings:** These settings must match the Set Community and Get Community names of the MultiVOIP you are adding. The default is **public**.

4. Click **OK**. If the MultiVOIP does not immediately appear in the Explorer, double-click the VOIP View icon. Multi-VOIPManager automatically searches for the MultiVOIP. If it finds it, the MultiVOIP icon is colored to show that it has connected. If it cannot find it, the icon is grayed out.

- Repeat steps 1–4 for each MultiVOIP. The Explorer window should now appear similar to that shown in the following illustration.



For more information about MultiVOIPManager, see the on-line help.